



AGENDA
COMMITTEE OF THE WHOLE MEETING
MONDAY, JUNE 6, 2016
NORTH AURORA VILLAGE HALL - 25 E. STATE ST.

CALL TO ORDER

ROLL CALL

AUDIENCE COMMENTS

TRUSTEE COMMENTS

DISCUSSION

1. Discussion of Entry Way Sign Bid

TRUSTEE COMMENTS

ADJOURN

Initials *SB*



Memorandum

To: Village President Dale Berman and Board of Trustees
cc: Steven Bosco, Village Administrator
Fr: Michael A. Glock
Date: June 1, 2016
Re: Welcome Signs

On June 1, 2016 the Village opened bids for the Building and Installing of 10 Welcome Signs. Attached are diagrams of the two size signs and a map of their potential locations.

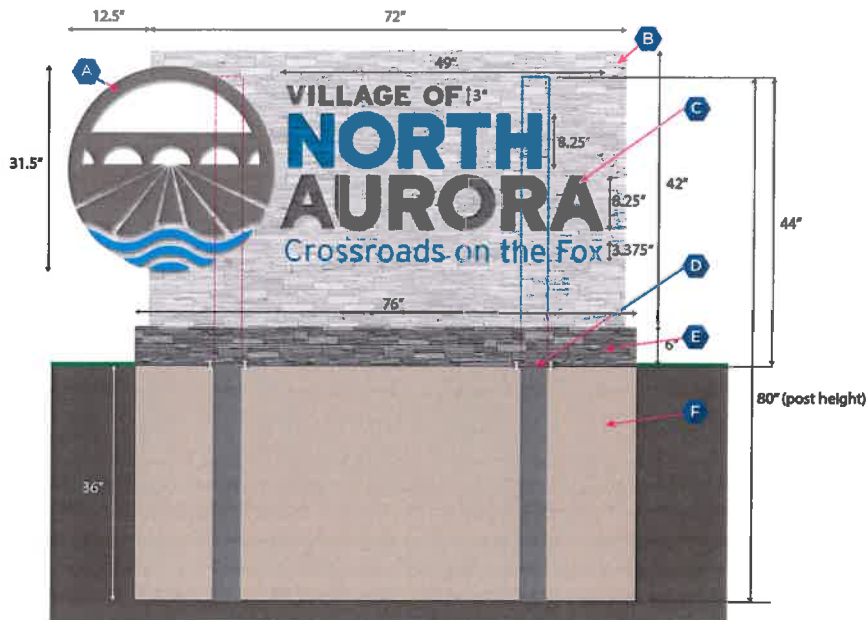
This project was previously bid, with three companies submitting bids. Two companies met the Village's responsible bidder requirements with their bids ranging from \$143,988.50 - \$161,725. The Village Board waived a portion of responsible bidder requirements and rebid the project in an effort to solicit a wider range of bids. However, only one company submitted a bid and this company also bid the first time.

Bid Results:

BIDDER	PRICE PER SMALL SIGN	PRICE PER LARGE SIGN	TOTAL BID (5 SMALL & 5 LARGE SIGNS)
Quantum Sign Corporation	No bid submitted	No bid submitted	No bid submitted
Identity Services	\$14,977.42	\$15,220.28	\$150,988.50
Omega Sign & Lighting Inc.	No bid submitted	No bid submitted	No bid submitted

Staff is looking to solicit feedback from the Village Board on how to proceed.

SIGN A (Small)



NOTES

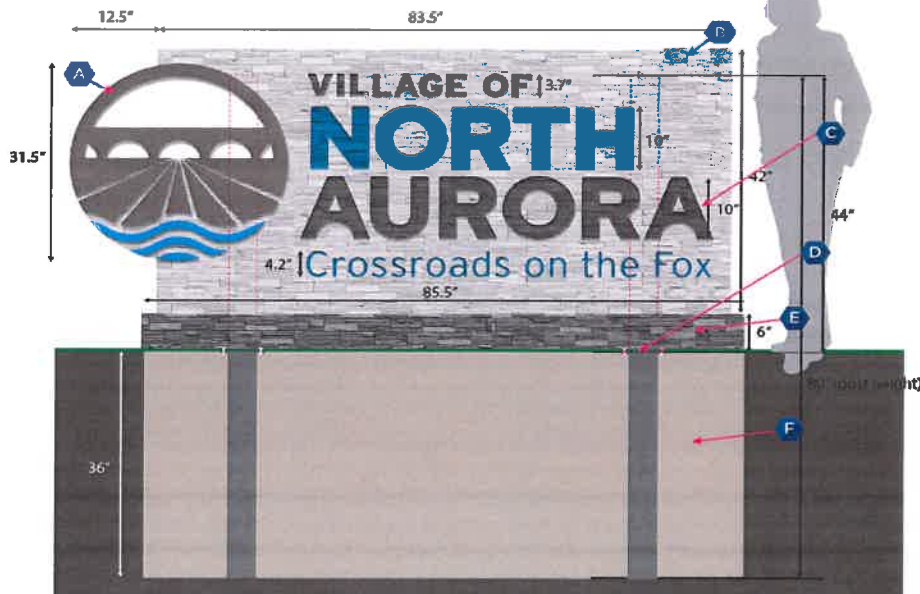
- A** 1/4" Acrylic Dimensional Logo
- B** Faux Stone Face
- C** 1/4" Acrylic Dimensional Letters
- D** 4" x 4" Metal Posts With Breakaway Post Connection
- E** 6" Faux Stone Base
- F** 36" Deep Cement Base

COLORS

THIS PROOF IS NOT FOR COLOR MATCHING



SIGN B (Large)



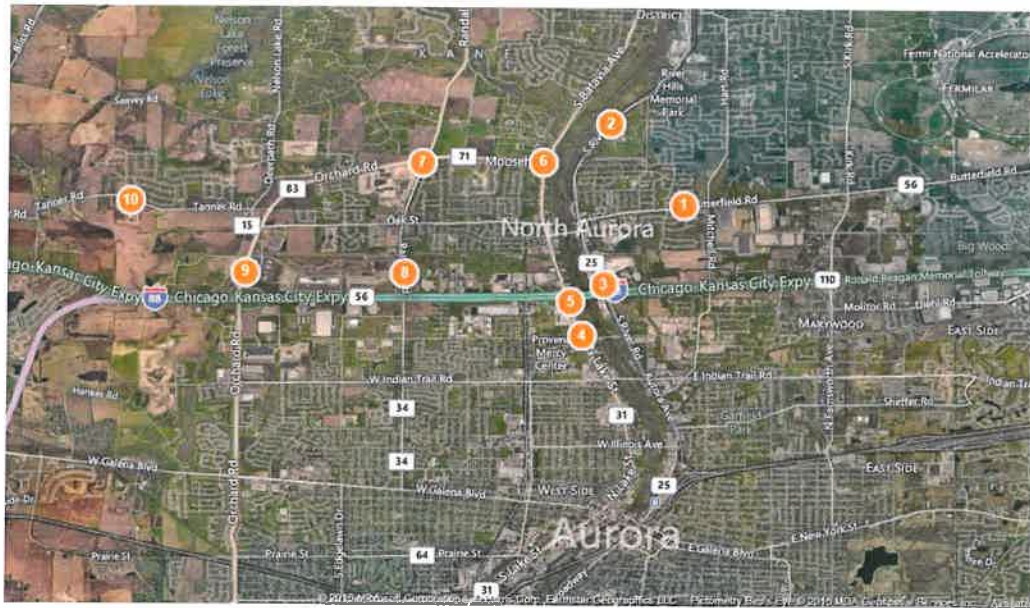
NOTES

- A** 1/4" Acrylic Dimensional Logo
- B** Faux Stone Face
- C** 1/4" Acrylic Dimensional Letters
- D** 4" x 4" Metal Posts With Breakaway Post Connection
- E** 6" Faux Stone Base
- F** 36" Deep Cement Base

COLORS

THIS PROOF IS NOT FOR COLOR MATCHING





AREA	SIGN	LOCATION
1	B	North side of Rt. 56 west of Mitchell
2	B	West side of Rt. 25 just north of Ridge Rd.
3	B	East side of Rt. 25 north of I-88 bridge
4	A	Northeast corner of Rt. 31 & Sullivan (Speedway Gas Station)
5	A	East side of Rt. 31 just north of Eden Supportive Living
6	A	Southwest Corner of Rt. 31 & Mooseheart Rd.
7	B	Southwest corner of Randall & Orchard Rd.
8	A	Northeast corner of Randall & Ice Cream Dr.
9	B	E. side of Orchard Rd. N. of Orchard Gateway at NA Auto Mall
10	A	South side of Tanner Rd. east of Western Dr.